

Combined Science  
PAPER 1  
Foundation Tier

Friday 10 May 2024 – Morning

Time: 1 hour 10 minutes

Diagram Booklet

THIS DIAGRAM BOOKLET MUST BE RETURNED WITH THE QUESTION PAPER AT THE END OF THE EXAMINATION.

In the boxes below, write your name, centre number and candidate number.

Surname					
Other names					
Centre Number					
Candidate Number					

**INSTRUCTIONS**

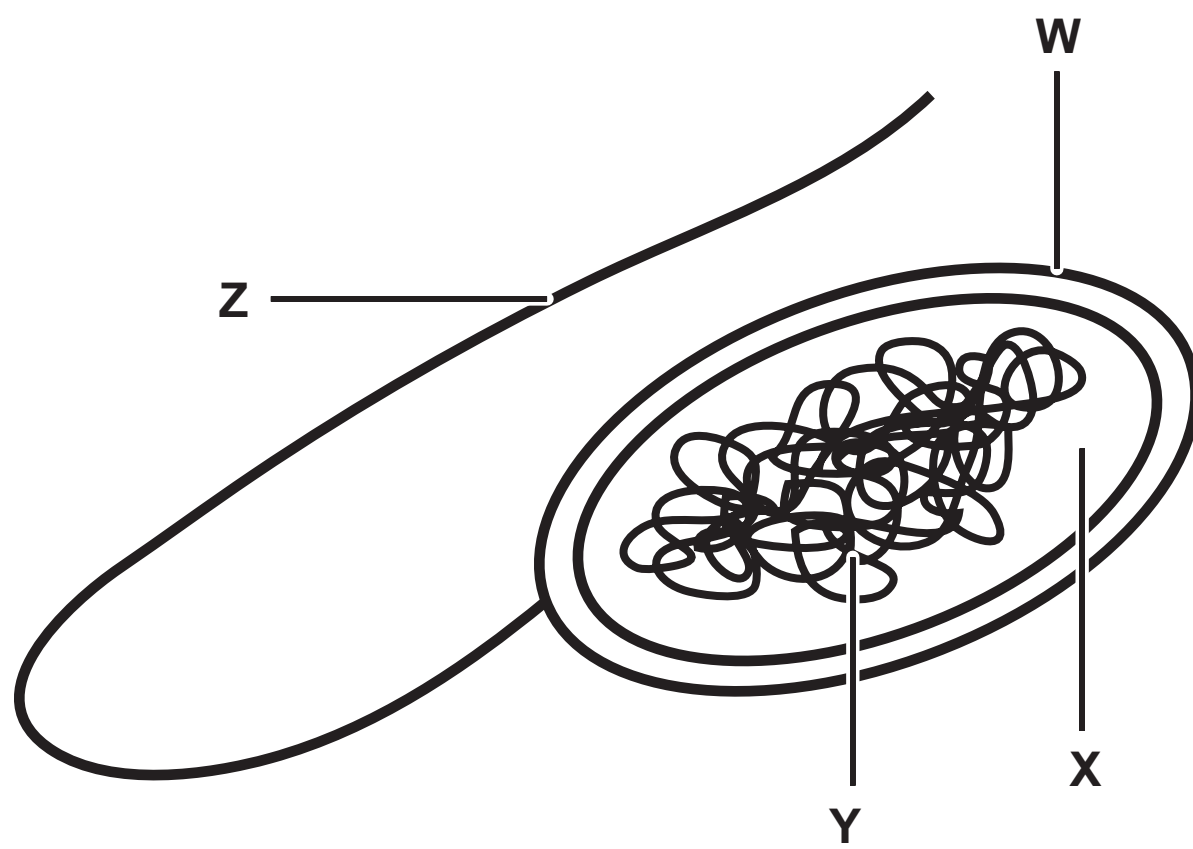
There may be spare copies of some diagrams in case you need them.

**CONTENTS**

<b>Page</b>	
<b>3</b>	<b>Question 1(a)</b>
<b>4</b>	<b>Question 1(b)</b>
<b>5</b>	<b>Question 2</b>
<b>6</b>	<b>Question 2(b)</b>
<b>7</b>	<b>Question 3</b>
<b>8</b>	<b>Question 3(c)</b>
<b>9</b>	<b>Question 4(b)</b>
<b>10</b>	<b>Question 4(d)</b>
<b>11</b>	<b>Question 5(a)</b>
<b>12</b>	<b>Question 5(b)</b>
<b>13</b>	<b>Question 6(b)</b>
<b>14</b>	<b>Question 6(d)(ii)</b>
<b>Spare Copies</b>	
<b>15</b>	<b>Question 1(b)</b>
<b>16</b>	<b>Question 3(c)</b>
<b>17</b>	<b>Question 5(a)</b>

## Question 1(a)

FIGURE 1

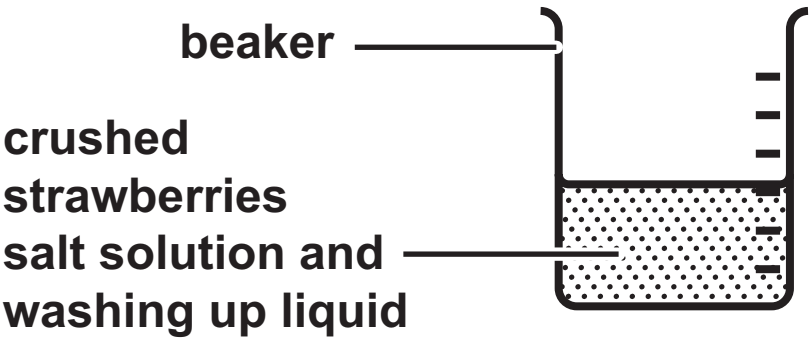


Question 1(b)

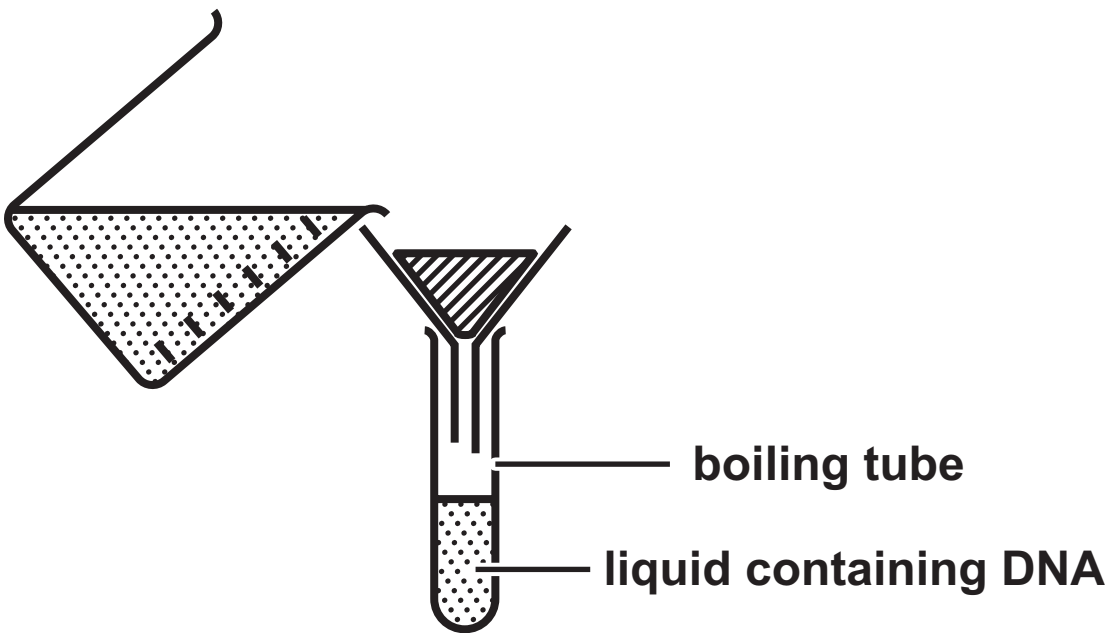
body defence	function
	● moves pathogens away from the lungs
hydrochloric acid ●	● makes antibodies
	● destroys pathogens in the stomach
skin ●	● makes antigens
	● stops pathogens entering the body

FIGURE 2

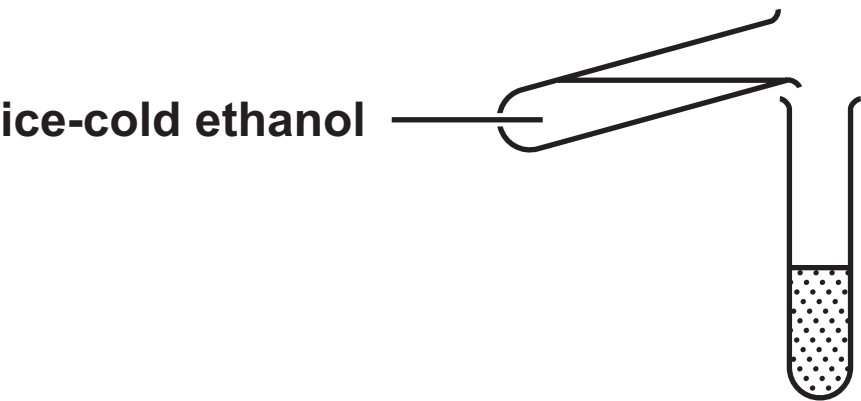
STAGE 1



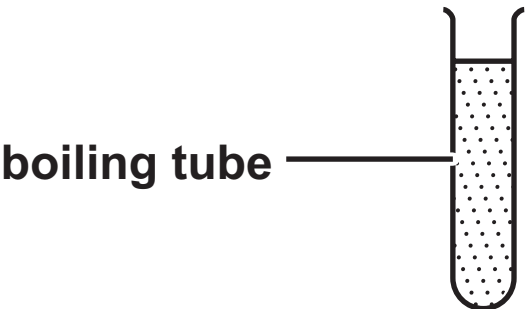
STAGE 2



STAGE 3



STAGE 4





Question 2(b)

FIGURE 3

strawberry	mass of DNA in ng
1	11·8
2	6·5
3	5·9
4	1·4

Question 3

FIGURE 4

information	red junglefowl	domesticated chicken
photograph		
mass of adult in kg	0.75 to 1.2	2.5 to 3.0
number of eggs laid per year	10 to 15	250 to 300

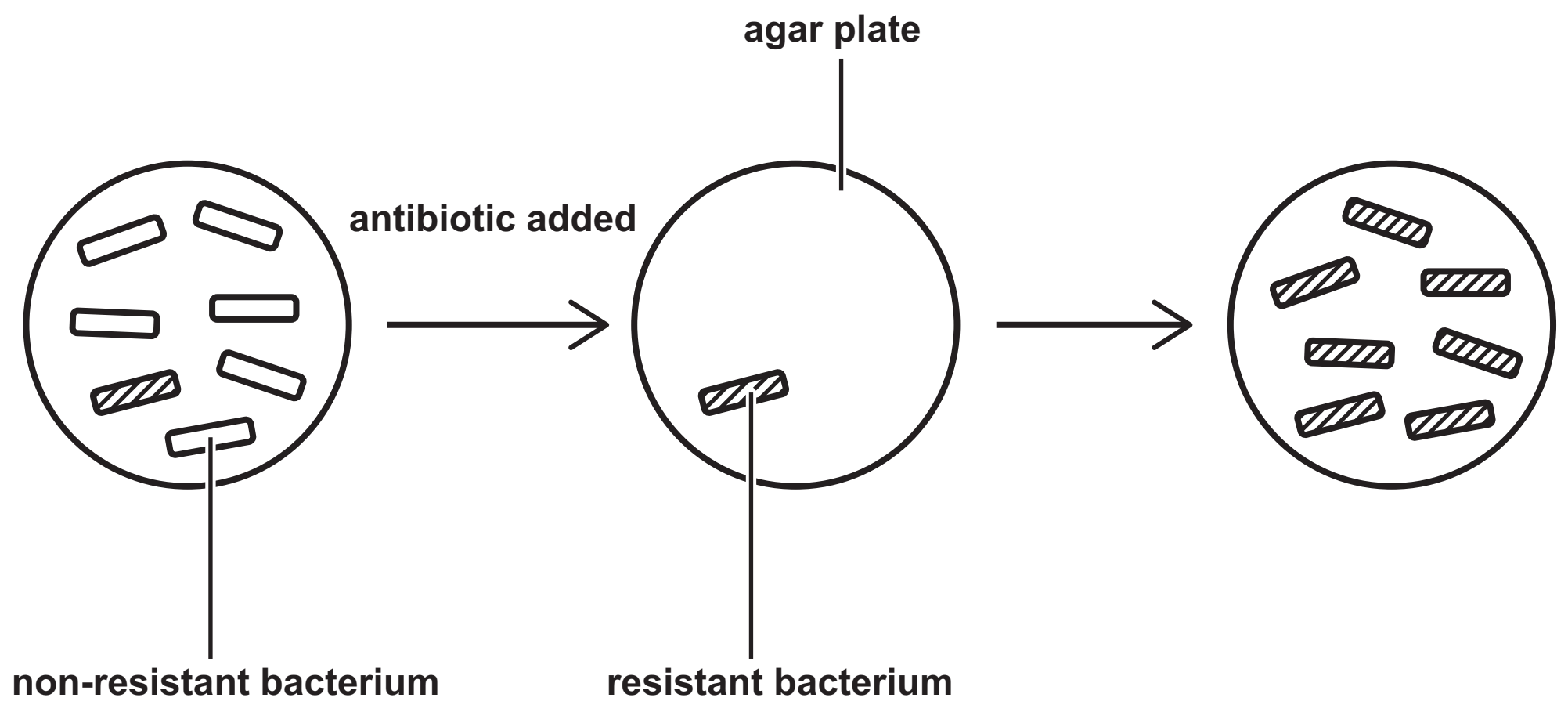
Question 3(c)

type of cell produced	type of cell division	number of daughter cells produced
body cell	mitosis	
gamete		



## Question 4(b)

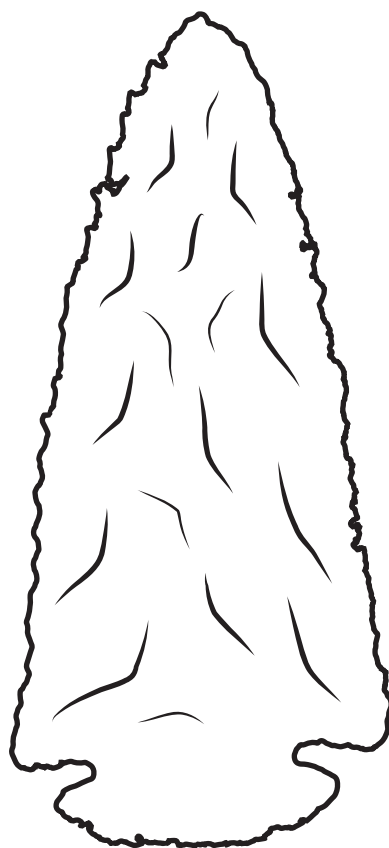
FIGURE 5



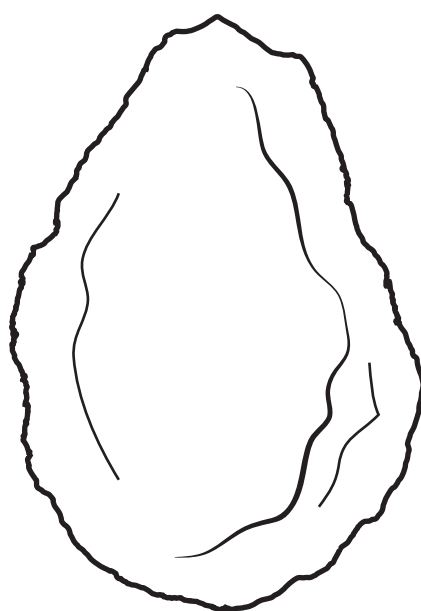
## Question 4(d)

**FIGURE 6**

**tool A**  
**approximately**  
**4 000 years old**

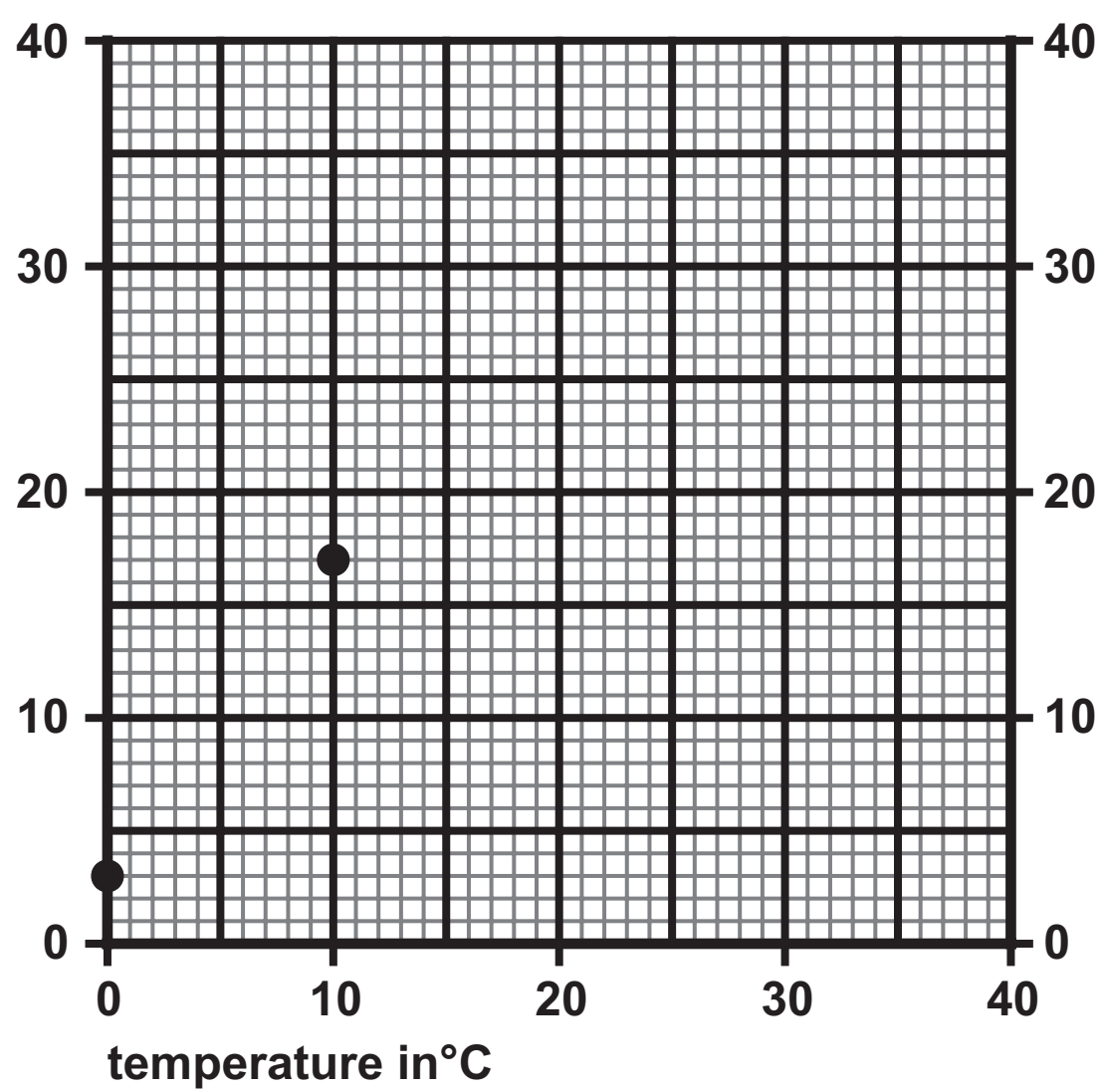


**tool B**  
**approximately**  
**100 000 years old**



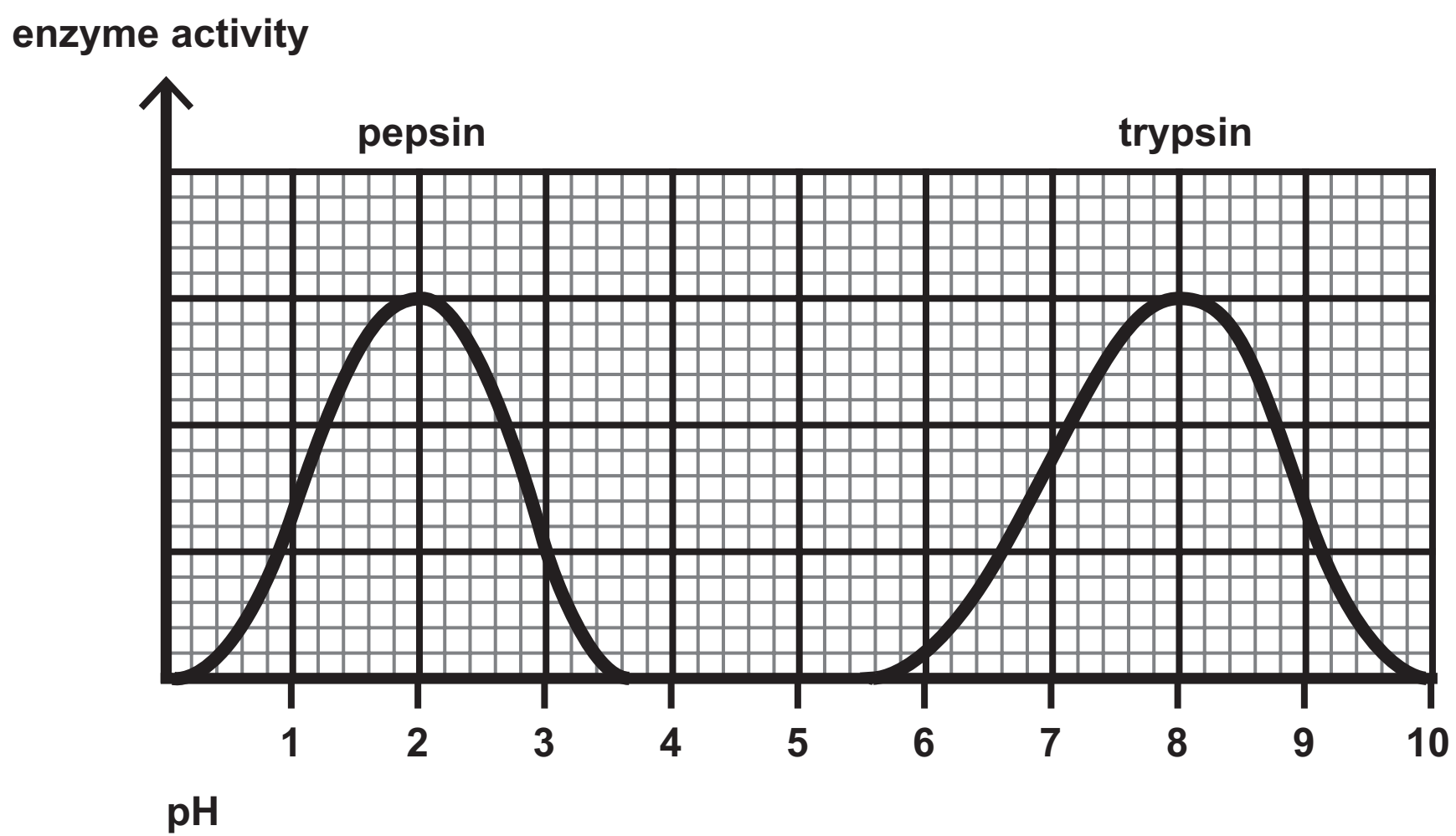
## Question 5(a)

rate of reaction in mg per minute



## Question 5(b)

FIGURE 8



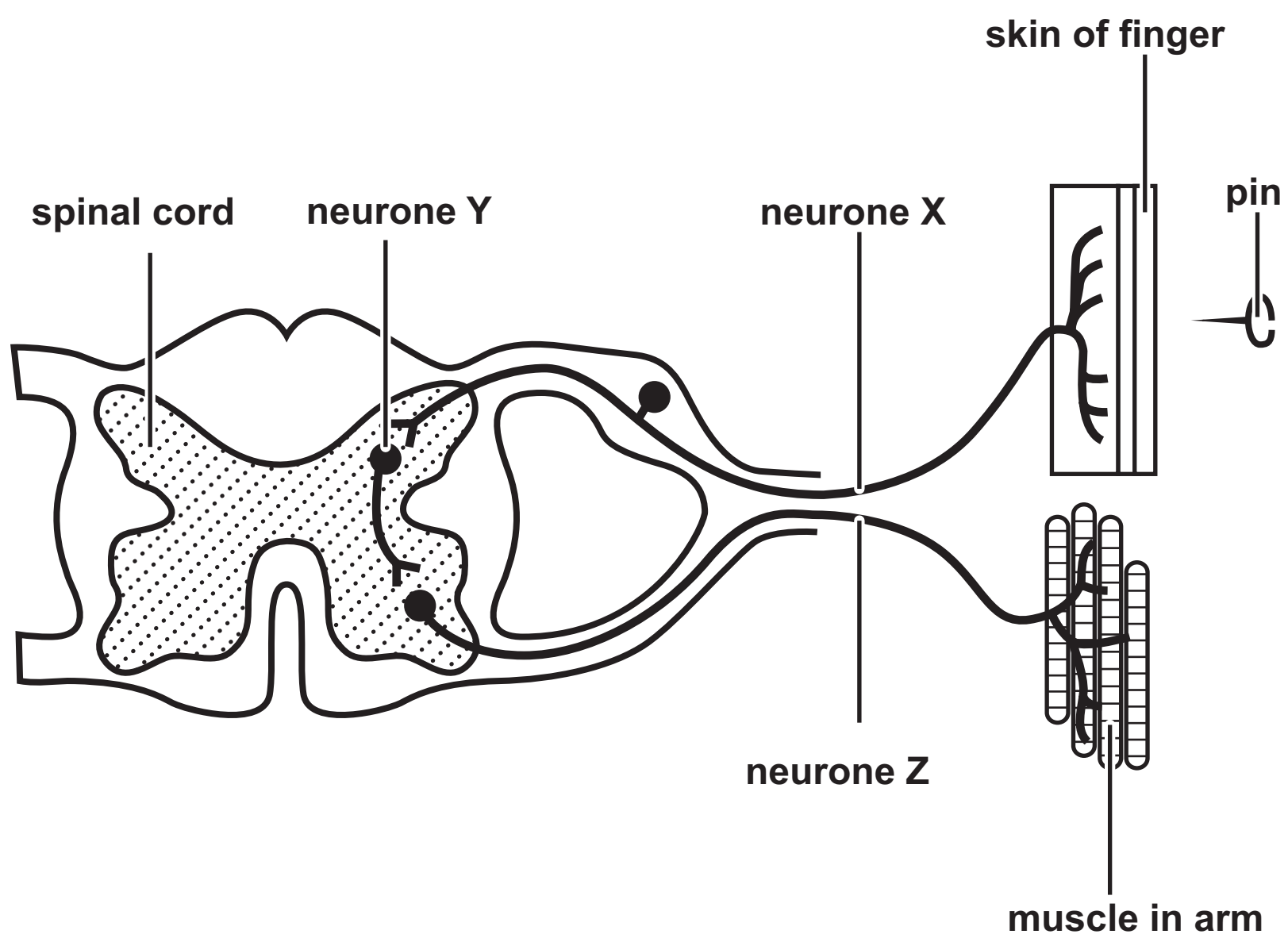
Question 6(b)

FIGURE 9

year	number of measles cases reported
1985	97 408
1995	7 447
2005	2 089
2015	1 193

## Question 6(d)(ii)

FIGURE 10



Question 1(b)

body defence	function
	● moves pathogens away from the lungs
hydrochloric acid ●	● makes antibodies
	● destroys pathogens in the stomach
skin ●	● makes antigens
	● stops pathogens entering the body

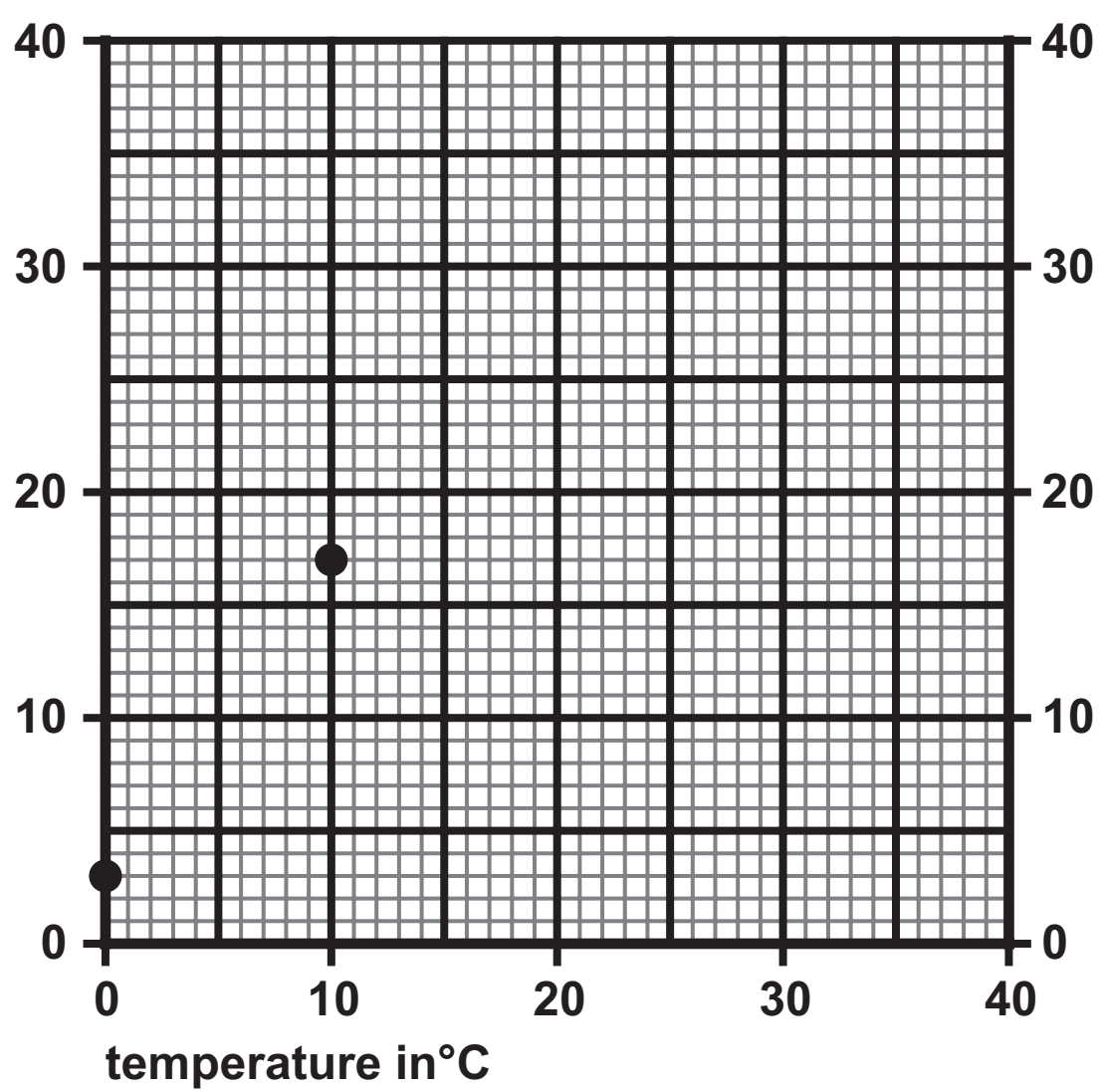
Question 3(c)

type of cell produced	type of cell division	number of daughter cells produced
body cell	mitosis	
gamete		



## Question 5(a)

rate of reaction in mg per minute



**Question 3**

(Source: © Jamil Bin Mat Isa/Shutterstock)

(Source: © Tsekhmister/Shutterstock)

**Question 4(d)**

(Source adapted from: © John Kepchar/Shutterstock)

(Source adapted from: © Eduardo Estellez/Shutterstock)